

Effective: January 1, 2008

**SCHEDULE B: - TRANSMISSION ACCESS TARIFF TREATMENT OF STANDBY SERVICES POLICY**

---

---

**Introduction:**

This Policy sets out EDTI's policy in relation to the treatment under its Transmission System Access Tariff of services provided for Standby Sites.

**Other Related Policies:**

Distribution Access Tariff Treatment of Standby Services Policy.

**Rate Classes Affected:**

This Policy applies to Sites designated by EDTI as Standby Sites belonging in the following Transmission System Access Tariff rate class:

- Primary and Secondary Commercial/Industrial Service 150 to < 5,000 kVA Connected to EPCOR's Distribution System
- Primary and Secondary Commercial/Industrial Service Greater than 5,000 kVA

**Policy:**

1. This Policy deals with the application of EDTI's Transmission System Access Service Tariff to services provided for Standby Sites.
2. EDTI's Transmission System Access Tariff is designed to "flow-through" the charges under the ISO's tariff.
3. Although the ISO's tariff does not address Standby Sites, EDTI has determined that under certain conditions, a waiver by EDTI of the demand charges under EDTI's Transmission System Access Tariff for Standby Sites is consistent with the "flow-through" design philosophy of its Transmission System Access Tariff.

Effective: January 1, 2008

4. In all cases where customers plan to use their Standby Site(s), the Customer must receive authorization from EDTI's Operator in Charge a minimum of 24 hours in advance of this planned use. Depending on the anticipated system loading this request may be rejected and/or an alternate more suitable time scheduled (i.e. to avoid increasing POD demands). As well, when directed by EDTI to do so, the Customer must forthwith switch the Load back on to the main Site(s). The Operator in Charge for EDTI is:

D&T System Control Operator  
North Service Centre  
12116-107 St.  
Edmonton, Alberta. T5G 2S7  
Phone: (780) 412-4501 Fax: (780) 412-4530

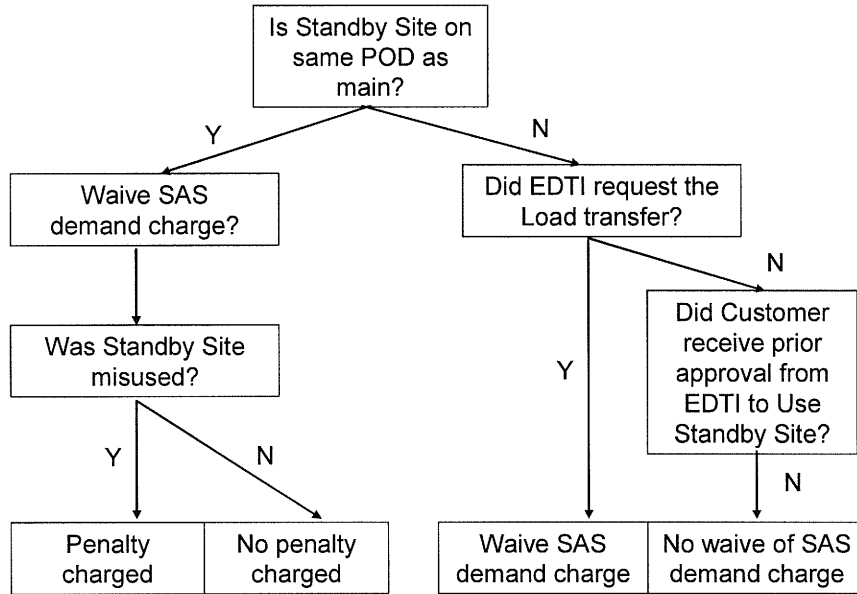
- a) Where both the main Site and associated Standby Site(s) are connected to the same POD, the Standby Site(s) will receive a waiver of the demand charges under EDTI's Transmission System Access Tariff.
- b) Where the main Site and associated Standby Site(s) are connected to different PODs, the Standby Site(s) will receive a waiver of the demand charges under EDTI's Transmission Access Tariff **only** if the Customer has received authorization and followed the instructions provided by EDTI's Operator in Charge.
5. Standby Sites must not to be used for peak avoidance or load splitting purposes (e.g. the peak demand registered on an associated Standby Site(s) must not exceed the peak on the main Site). Such misuse of the Standby Site will result in a penalty charge for each incidence of misuse determined as follows:

$$\text{Penalty Charge} = \$10 \times (\text{KW}_{\text{Standby Site peak demand}} - \text{KW}_{\text{Main Site billing demand}})$$

6. In cases where EDTI requires the Customer with a Standby Site to switch load to the Standby Site, EDTI will also waive the demand charges under EDTI's Transmission System Access Tariff at that site.

Effective: January 1, 2008

7. The following flow chart illustrates the Transmission System Access Tariff treatment for Standby Sites :



8. For tariff administration purposes, all Standby Sites are initially assumed to have met the above qualifying criteria, and will have the demand charges under the Transmission System Access Tariff waived. The waiver will only be revoked if EDTI subsequently determines that the Standby Site did not qualify for the waiver.
9. EDTI will conduct periodic reviews on Standby Sites to verify that they are not being misused. EDTI’s determination shall be final.
10. EPCOR will not make any further adjustments in relation to the waiver of demand charges under the Transmission System Access Tariff after the Final Settlement date.
11. This Policy will take effect on January 1, 2005 and will supersede and replace the previous policy applicable to the treatment of services for Standby Sites under EDTI’s Transmission System Access Tariff.